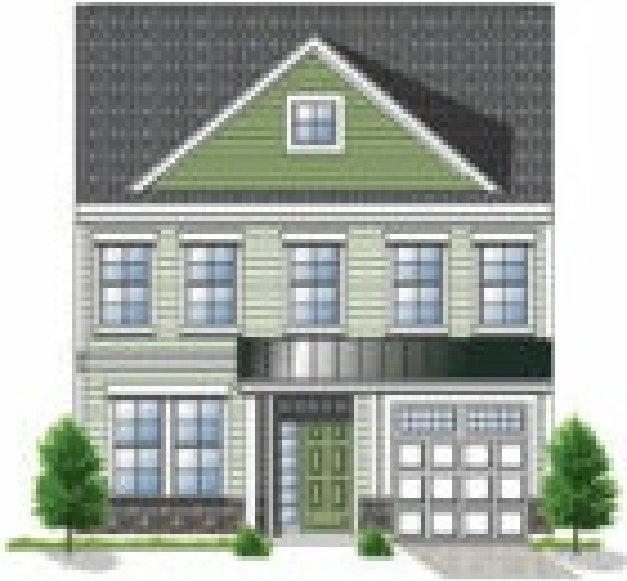




Powered by [newhomesguide.com](https://www.newhomesguide.com)



Base Price

\$

3 Beds | 2 Baths | 1 Half Bath | 1 Garage

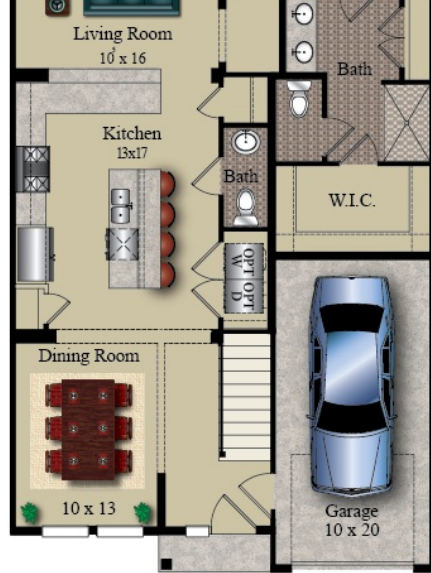
About This Community



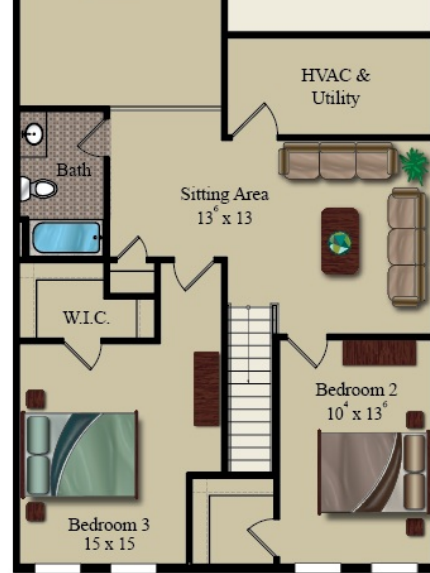
Floorplans

THE REHOBOTH

The floorplan for 'THE REHOBOTH' shows a layout with a large 'Opt. Sunroom' (11' x 14') at the front, which includes a fireplace and access to an 'Opt.' patio. To the right is a 'Master Bedroom' with a large bed and a walk-in closet. A 'Patio' is located between the sunroom and the master bedroom. To the right of the master bedroom is an 'Attic' and a room labeled 'Open to'. The Piccard Homes logo is also present in the upper right corner of the plan.



FIRST FLOOR PLAN



SECOND FLOOR PLAN



Illustrations are the designer's concepts and may vary in detail from plans and specifications. All room dimensions are approximate and cannot be guaranteed. Plan dimensions, architectural features, and materials are subject to change without notice or obligation. Flooring, landscaping, furniture, and fixtures are shown for artistic presentation only. The builder's ongoing process of design improvement and the actual building conditions may cause change (i.e. Windows, doors, ceilings, and materials). Options indicated are available at additional cost. This rendering is for illustration purposes only and is not part of a legal document.