

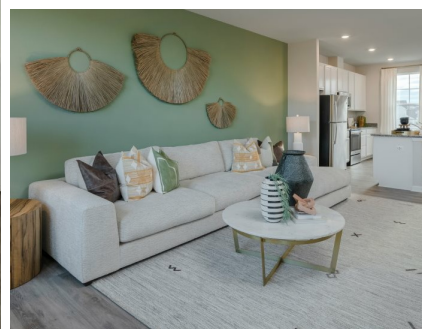
# Lot T019 Extrovert Drive

## Charles Town, WV 25414

# LENNAR®

Powered by [newhomesguide.com](https://newhomesguide.com)

Single-Family



## \$339,220

3 Beds | 2 Baths | 2 Half Baths | 3 Levels | 1 Garage | 2,229 Sq Ft

## About This House

This new three-story townhome design combines comfort and style, with a finished recreation room, half bath and a one-car garage on the first floor. The second floor showcases an open-plan layout combining a dining room for memorable meals, a kitchen with granite countertops and GE stainless steel appliances for adventurous cooks and a Great Room for shared moments. The third floor hosts three restful bedrooms including a large owner's suite with 2-foot extension, a walk-in closet and luxurious bathroom. Large backyard space, washer/dryer included.

## About This Community

This new three-story townhome design combines comfort and style, with a finished recreation room, half bath and a one-car garage on the first floor. The second floor showcases an open-plan layout combining a dining room for memorable meals, a kitchen with granite countertops and GE stainless steel appliances for adventurous cooks and a Great Room for shared moments. The third floor hosts three restful bedrooms including a large owner's suite with 2-foot extension, a walk-in closet and luxurious bathroom. Large backyard space, washer/dryer included.



**Lot T019 Extrovert Drive**  
Charles Town, WV 25414



**Floorplans**




**Lot T019 Extrovert Drive**  
Charles Town, WV 25414



**Floorplans**

