



Powered by [newhomesguide.com](https://www.newhomesguide.com)



Base Price

\$

4 Beds | 2 Baths | 1 Half Bath | 2 Garage

# About This Community



Floorplans

# THE TENNYSON

The floorplan for 'The Tennyson' is a detailed architectural drawing showing the layout of a house. It includes a large 'Open to Below' area on the left, a central 'Hall' with a staircase, and several bedrooms and bathrooms. The layout is color-coded with beige for walls, light blue for floors, and various colors for furniture and fixtures. Dimensions are provided for most rooms.

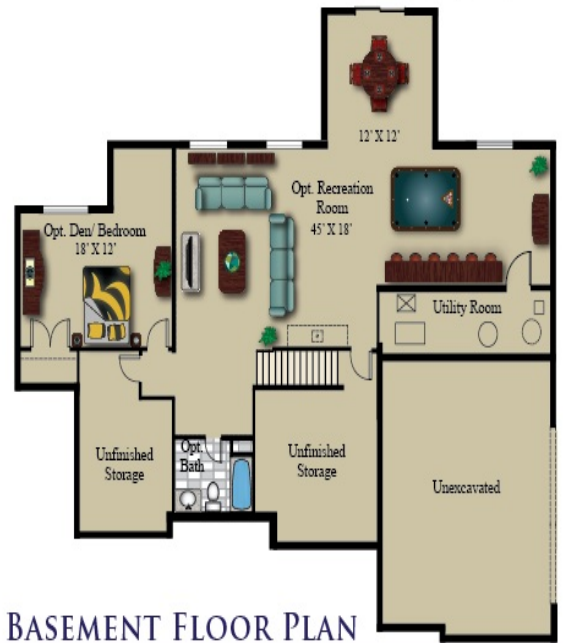
**Room Details:**

- Open to Below
- Bedroom #3: 13'-2" X 12'-1"
- Bedroom #2: 12'-6" X 12'-6"
- Bedroom #4: 12' X 14'
- Bedroom #5: Opt.
- Hall
- Bath
- Opt. Bath
- Sun/Breakfast Room: 13' X 12'
- Kitchen: 17' X 14'
- Study: 9' 10" X 12'-6"
- Closet: 7' X 5'



FIRST FLOOR PLAN

SECOND FLOOR PLAN



BASEMENT FLOOR PLAN



Illustrations are the designer's concepts and may vary in detail from plans and specifications. All room dimensions are approximate and cannot be guaranteed. Plan dimensions, architectural features, and materials are subject to change without notice or obligation. Flooring, landscaping, furniture, and the like are shown for artistic presentation only. The builder's ongoing programs of design improvement and the actual building conditions may create change (i.e. Windows, doors, ceiling, and materials). Options indicated are available at additional cost. This rendering is for illustration purposes only and is not part of a legal document.