



Base Price

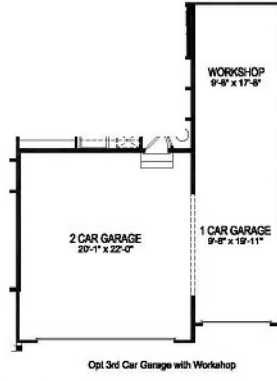
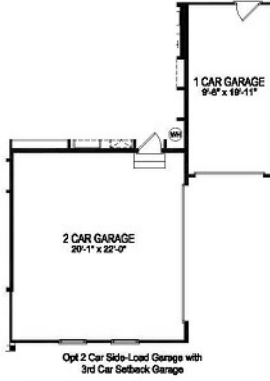
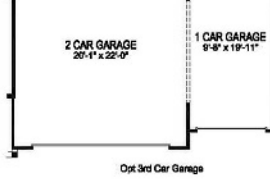
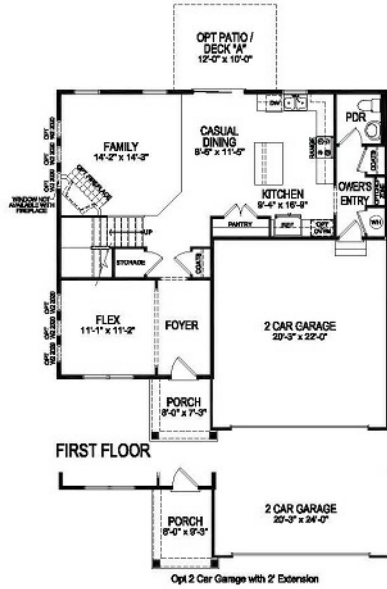
**\$360,990**

**4 Beds | 2 Baths | 1 Half Bath | 2 Garage**

## About This Plan

Welcome to the Winston! Get ready to feel at home the second you enter the front door, but be careful, your guests may never want to leave. This single-family floor plan screams perfection for the entertainer at heart. It's luxurious kitchen with oversized island open to the family room keeps the chief from missing out on all of the fun. First floor includes flex space making for a wonderful home office, play room or formal living room. The second level features the owner's suite with private bath and walk in closet. Three more generous sized bedrooms and second full bath complete the second floor.





Single story with optional 4 Bedroom / 2.5 Bath / 3-Car Garage

D-402-39/40 - 2244 REV. 042618