



Powered by newhomesguide.com



Base Price

\$380,990

3 Beds | 2 Baths | 1 Half Bath | 2 Garage

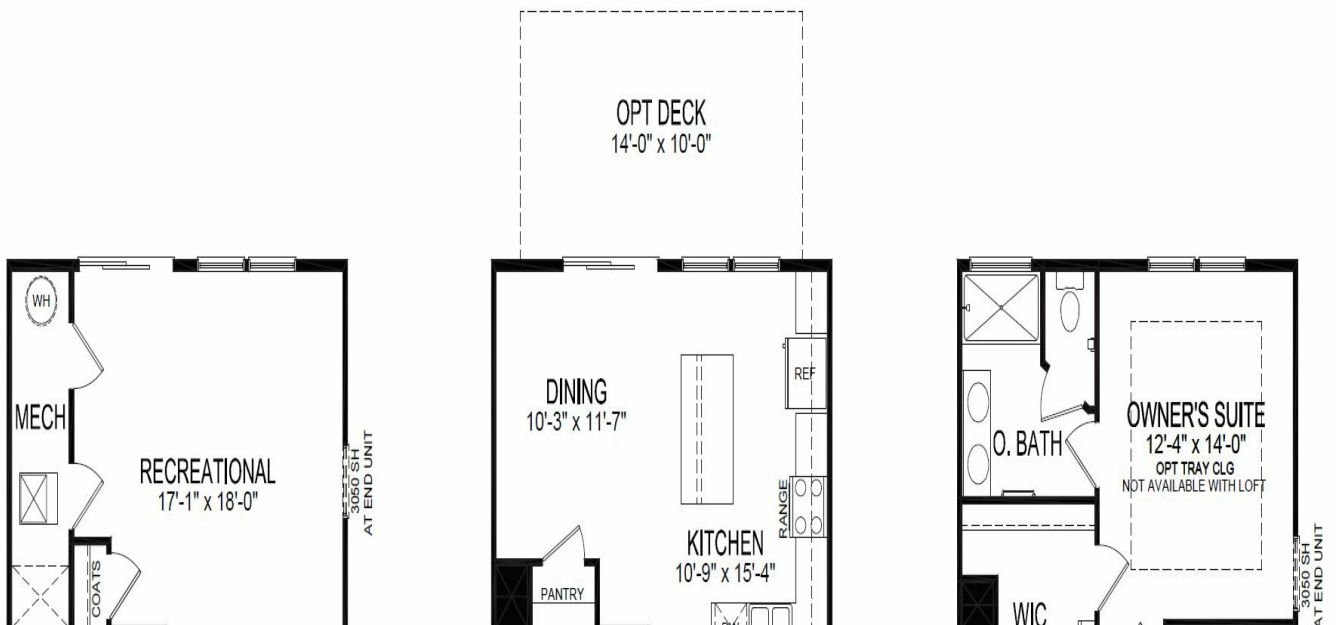
About This Plan

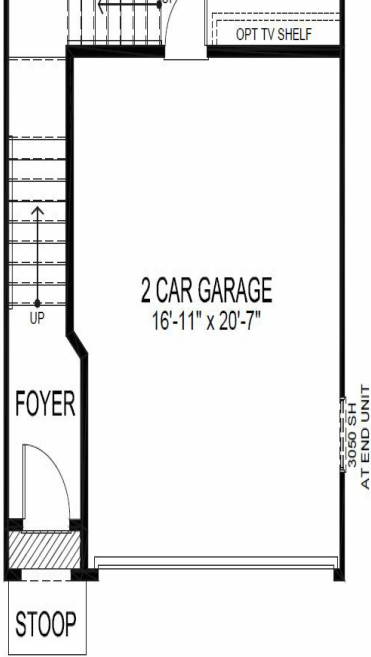
The Auburn is a 2,270 square-foot townhome at Severn Meadows in the desirable neighborhood of Severn, Maryland. This popular Auburn home design includes 3 bedrooms, 2.5 bathrooms, and a 2-car garage. You will love the stainless steel appliances, dining area, and pantry in the kitchen. Other highlights include: lower level recreation room, upstairs laundry room, and a deck perfect for grilling or relaxing with family and friends! This home plan is available now so stop by Severn Meadows today and see it for yourself!

About This Community

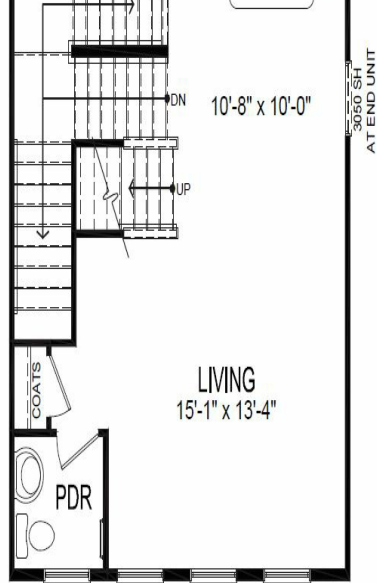
The Auburn is a 2,270 square-foot townhome at Severn Meadows in the desirable neighborhood of Severn, Maryland. This popular Auburn home design includes 3 bedrooms, 2.5 bathrooms, and a 2-car garage. You will love the stainless steel appliances, dining area, and pantry in the kitchen. Other highlights include: lower level recreation room, upstairs laundry room, and a deck perfect for grilling or relaxing with family and friends! This home plan is available now so stop by Severn Meadows today and see it for yourself!

Floorplans

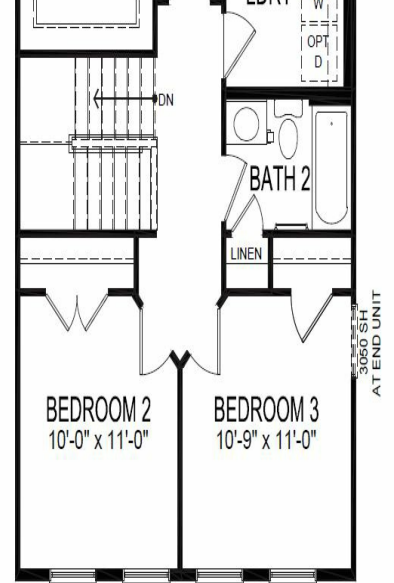




LOWER LEVEL



FIRST FLOOR



SECOND FLOOR